

Federal Funding Support Services



About ILLUME

ILLUME Advising, LLC (ILLUME) offers a broad range of consulting and research services to help our clients make informed decisions, implement effective policies, and achieve their energy goals. We aim to advance, re-envision, and equitably transform the energy industry by combining community-forward solutions with technical ingenuity. We help our clients reach their goals by serving as an additional team member with unique expertise, creative solutions, and a commitment to producing community, climate, and energy benefits.

Our Services

ILLUME offers the following services within our core practice areas:

Equity

ILLUME has led the energy industry in translating ambitious policy goals into actionable strategies that states, local government, and communities can successfully implement. We do this by supporting our clients with a wide range of services from population analyses, benefits and harms assessments, equity-forward design consulting, and policy alignment across federal, state, and local efforts.

Human Insights

ILLUME provides comprehensive community engagement and embedded research services to foster program and policy successes. We use proven approaches to help our clients develop lasting partnerships and build community-informed decision-making. Working closely as a partner, ILLUME helps to identify important stakeholders that enable your progress, such as utilities, businesses, community groups, and environmental organizations. We facilitate dialogue, conduct surveys or focus groups, and gather feedback to ensure that diverse perspectives are considered.

Success Planning, Support, and Measurement

ILLUME designs and implements evaluation frameworks to help our clients understand the effectiveness of their energy programs and investments. By conducting thoughtful evaluations, we identify areas for improvement, measure the impact of design and investment decisions, and support data-driven strategies to ensure future successes.

Opportunity Identification and Development

ILLUME provides technical expertise in areas such as distributed energy resources, energy efficient technologies, and emerging trends in the energy sector. We help clients identify funding opportunities and build strategies to help communities save energy and improve resiliency, identify and prioritize their investments in new technologies, and navigate complex technical challenges that arise in the implementation of energy programs.

Custom Studies

We work with our clients to solve a wide range of challenges they face during energy transitions using ingenuity and technical innovation. We work with our clients to support them as they face new problems, we develop new methods to understand and address those problems, and build new solutions to be proven out together.



Capturing Justice40 Benefits for Arizona Communities

About Justice40

Justice40 (J40) is a rare opportunity for the State of Arizona and our most impacted communities to receive the benefits of federal investment in clean energy technologies. President Biden's Executive Order 14008 announced J40, which mandates that at least 40% of the benefits of certain federal programs must flow to disadvantaged communities. To meet the goal of J40, ILLUME offers community-centered support services to ensure that Arizona's most impacted communities receive the benefits of federal dollars.

Justice40 Services

Identify Qualifying Communities

ILLUME provides a framework to identify communities that qualify as "disadvantaged" under J40. We also determine which communities may benefit the most from Infrastructure Investment and Jobs Act (IIJA) and Inflation Reduction Act (IRA) covered programs to ensure that the state's investments positively impact the Arizonans who need it the most.

Align J40 Policy Priorities with Program Design

State formula funds have varying degrees of flexibility. Many can be designed to better serve the needs of disadvantaged communities. Others, by contrast, may be inflexible yet require adherence to J40 policy goals and tracking requirements. We can support the Office of Resiliency by prioritizing covered programs for the state that will generate the greatest impact. For these programs, our team will create a framework to align with J40 and develop Arizona-specific—and, where possible, community-specific—delivery strategies.

Develop Community Benefits Agreements

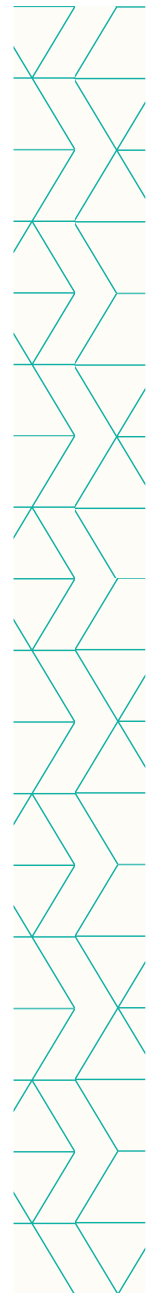
Under J40, many funding opportunity announcements (FOAs) require Community Benefits Agreements (CBAs), where program administrators work with local communities to identify and document the outcomes that communities would like to achieve as part of a program. ILLUME can augment your team by developing a robust stakeholder engagement process; we can serve as a stakeholder convener, facilitator, and liaison between the Office of Resiliency and the communities that will benefit from the program.

Embed J40 in Funding Agreements (FA)

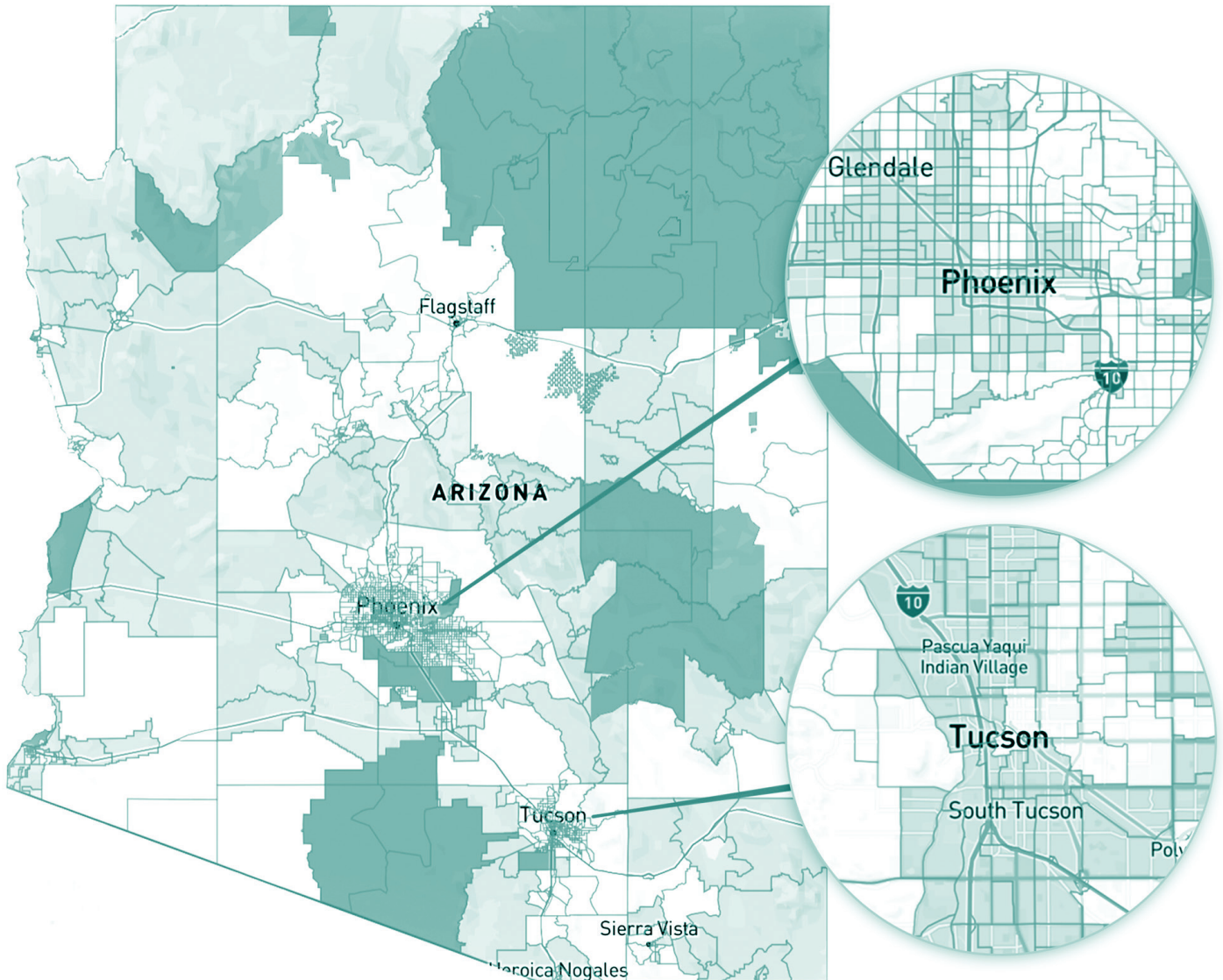
ILLUME can support you in the development of an FA with the Department of Energy (or other federal departments). We will ensure that your FA reflects your office's focus on equity and your CBAs. We will also ensure that your FA includes a J40-inclusive response in your scope of work, project milestones, schedule, and budget.

Identify, Track, and Report on J40 Policy Outcomes and Community Benefits

J40 covered programs have benefits reporting requirements to ensure the programs align with the mission of J40. ILLUME's equity team are experts in developing benefits metrics frameworks for all covered programs. We can ensure that your programs track, report, and showcase the impacts of the Office of Resiliency's programs for disadvantaged communities against J40 policy priorities.



Census tracts that are overburdened and underserved are highlighted as being disadvantaged on the map. Federally Recognized Tribes, including Alaska Native Villages, are also considered disadvantaged communities.



These tracts are considered disadvantaged because they meet more than one burden threshold and the associated socioeconomic threshold.

About ILLUME's Technical Assistance Experience

The Infrastructure Investment and Jobs Act (IIJA) and Inflation Reduction Act (IRA) offer a historic opportunity for Arizona communities to receive the benefits of building and system upgrades and efficient technologies. These legislative packages create multiple funding streams, ranging from tax incentives to loans and grants, designed to improve energy efficiency and climate resiliency at scale. To help Arizonans benefit from investments, ILLUME can support the Office of Resiliency to identify, pursue, and apply funding to upgrade and enhance homes and buildings across the state.

ILLUME's Technical Assistance Services

Ensure the State is Equipped with an Energy and Resiliency Plan

The Department of Energy requires that states seeking formula funds have an energy, climate, and resiliency plan in place. ILLUME supports our clients with these services and will ensure that the State has the right expertise in place to fully capture the opportunities available through Federal programs.

Provide Ongoing and Ad Hoc Technical Assistance

ILLUME can support the Office of Resiliency by acting as an extension of your team, providing technical assistance via technology and opportunity summary briefings, document reviews, strategic planning, and responding to ad hoc research requests across a wide range of topics, including electrification, energy efficiency, building codes, and resiliency.

Track, Identify, and Pursue Funding Opportunities

Federal and private funding opportunities do not all follow an annual cadence. We can help track, inventory, and prioritize funding opportunities, based on the Office's strategic, regional, and community needs.

Facilitate Team Creation

We can help the Office of Resiliency identify and engage teams, facilitate teaming agreements, and, as needed, create and submit applications for funding with the diverse team of community leaders, implementation contractors, research experts, and other key industry actors required. We can also function as the research team member, where appropriate.

Match Community Needs with Funding Opportunities

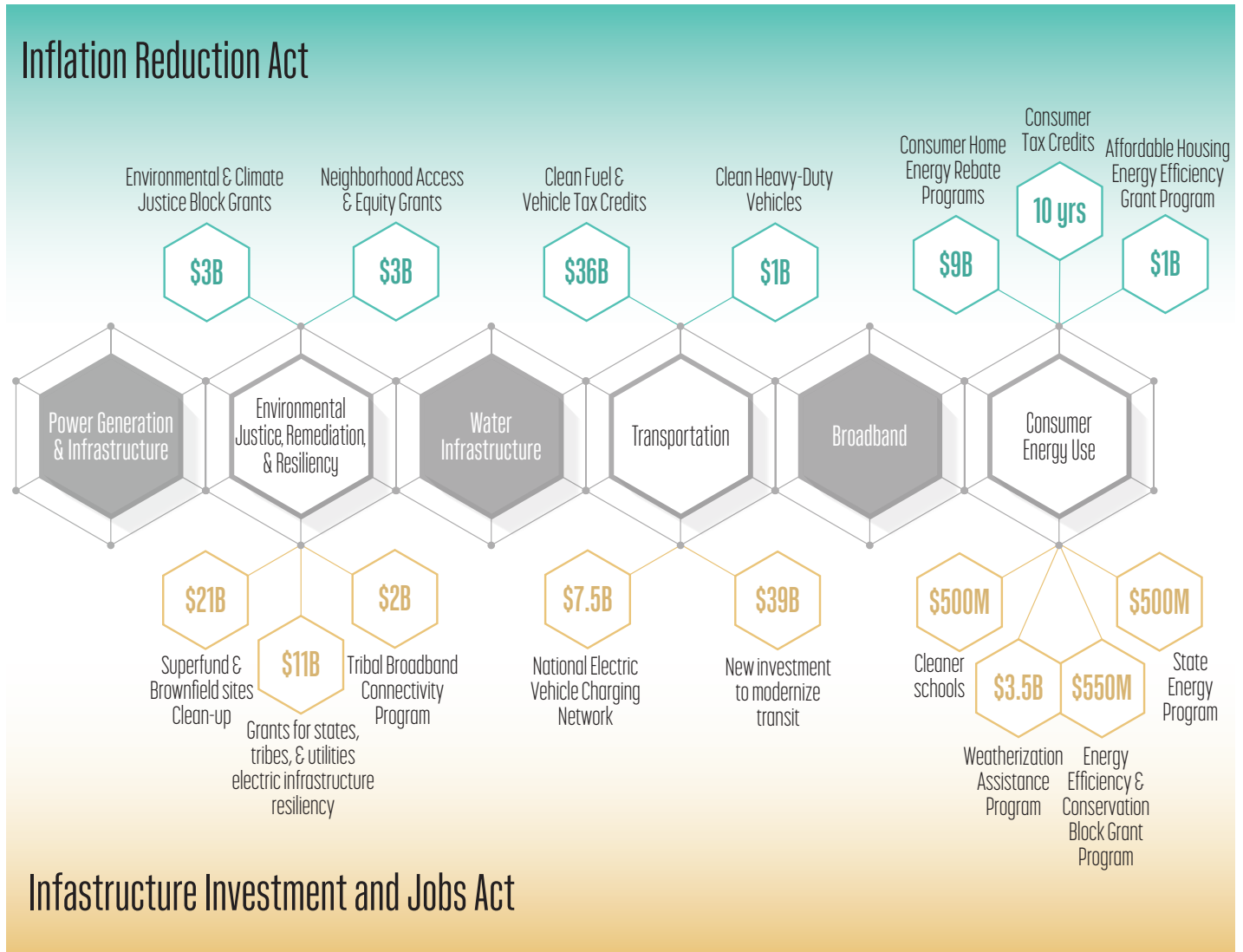
There is significant formula and competitive federal funding available and allocated to the full array of building upgrades, from weatherization to electrification, as well as all residential, commercial, and industrial customers. We can help you identify best-fit communities for available funding.

Develop and Implement Assessment Frameworks

ILLUME can create evaluation frameworks and perform tasks to allow the Office of Resiliency to assess the impact and performance of the State's investments. Our team can create compelling and digestible deliverables and communications of these assessment findings that enhance transparency and build trust.



Federal Funding for Community Investment in Two Acts



About ILLUME's Stakeholder Services

Communities and program stakeholders are the foundation of successful investments. Their input and on-the-ground perspective is critical to ensuring that programs create benefits, reduce harms, and enhance the well-being of those served. We support our clients in building community partnerships and stakeholder relationships focused on building trust in the near and long-term.

Core Principals for Stakeholder Engagement

Create Trust and Build Personal Connections

Trust is built over time and through continuous, thoughtful engagement with community members. Stakeholders are allies in helping you reach your policy goals and should be engaged as such. We support our clients in developing long-standing, trust-grounded relationships by building out frameworks for engagement and by facilitating connections.

Pursue Mutually Beneficial Partnerships

All programs should create a mutual benefit for community stakeholders; in other words, stakeholders should help to identify the benefits that matter most to their communities and be empowered to serve as partners in delivering those benefits to their communities. We support this process by developing a co-created program design process, one where we facilitate consensus and moderate key decisions.

Set Realistic Expectations

When we ask stakeholders to engage in programs, we are asking them to trust us with their time, reputations, and hard-earned goodwill in their community. At ILLUME, we feel it is important to be realistic on what a program can and cannot deliver – and what is expected of all participants in the process, so everyone begins the process clear-eyed and with true buy-in. Our team provides strategies to ensure transparency among stakeholders and to gain buy-in.

Involve Communities Throughout the Life-Cycle

To create enduring partnerships, it is important to engage the community throughout the program life-cycle; in planning, throughout implementation, and along a continuous improvement continuum. We provide support to create engagement plans that build trust through consistent, thoughtful collaboration and shared learning.

Minimize Burdens

Many of our community partners are underfunded and over-extended in serving their core missions. We recognize by developing compensation strategies and services, such as childcare and flexible engagement plans, more stakeholders can fully participate in our initiatives.

Select List of Organizations ILLUME has Convened

ILLUME convened nearly 500 stakeholders to support the development of the Arizona Transportation Electrification Plan.

Our working groups representing many organizations, including but not limited to:

Arizona Chamber of Commerce
Southwest Energy Efficiency Partnership
Western Resource Advocates
Arizona State University
University of Arizona
City of Avondale
City of Tucson
City of Flagstaff
City of Phoenix
TEP
APS
SRP
Tesla

At ILLUME, we recognize that we are only as successful as our relationships. We pride ourselves on delivering exceptional advising, rigorous research, and partnerships built for innovation.

Valued by Clients

“As Georgia Power sought to evaluate our programs, we wanted input from a nationally recognized industry leader to perform this analysis. Illume Advising is widely known as a thought leader in this field, and has an expert knowledge of how these programs truly work. Illume was able to use their program management skills and industry expertise to deliver an excellent evaluation on time and on budget.”

– Jeff Smith,
Energy Efficiency Strategy & Implementation Manager,
Georgia Power Company

“The research team [ILLUME] conducted interviews with more than two dozen community stakeholders. Along with this research, these interviews helped the team understand how ComEd could increase its impact by collaborating with existing community networks to bolster awareness of assistance options available and help provide skills and training in next-generation technologies to support communities’ workforce of the future. Additionally, the study identified barriers and opportunities ComEd cannot directly address but can advocate for in partnership with other organizations and regulators to break down those barriers.”

– ComEd

Respected Among Thought Leaders

“As we face challenging times ahead in the energy and climate world, we will need the help and assistance from experts who are experienced, thoughtful, and sensitive to the issues at hand. Illume fits that role in looking forward, in proposing and analyzing different strategies and scenarios, and in sharing their wisdom in planning for an uncertain future.”

– Dr. Ed Vine,
Nobel Peace Prize Laureate as part of the Intergovernmental Panel on Climate Change,
affiliate at the Lawrence Berkeley National Laboratory (LBNL)
and at the California Institute for Energy and Environment (CIEE)

Trusted Among Partners

“Since bursting onto the advisory scene, ILLUME has quickly catapulted to the top of the energy consulting field, becoming one of the most respected research firms in the space. ILLUME’s leadership brings a strategic vision, technical excellence, and a fresh voice that is exactly what this changing industry needs. ILLUME pushes the bar higher, asks the difficult questions, and brings innovative solutions—and industry leaders are taking note.”

– Michael Mernick,
Senior Vice President,
Market Development & Strategic Partnerships, ICF

Noteworthy Clients:

Arizona Public Service
(APS)

Tucson Electric Power
(TEP)

U.S. Department
of Energy (DOE)

U.S. Environmental
Protection Agency
(EPA)

Maine Governor’s
Office of Policy
Innovation
& the Future

Commonwealth Edison
(ComEd)

Connecticut Energy
Efficiency Board
(CT EEB)

New York State
Research &
Development
Authority (NYSERDA)

Puget Sound Energy
(PSE)

Oregon Office
of Housing and
Community Services

Pacific Northwest
National Laboratory
(PNNL)

Massachusetts Energy
Efficiency Advisory
Council